

# CRYSTAL REPORTS®

## CRYSTAL REPORTS®, VERSION FOR ECLIPSE 2.0 WHAT'S NEW

**SAP Solution Brief**  
SAP BusinessObjects Business Intelligence  
Solutions  
Crystal Reports

# CRYSTAL REPORTS, VERSION FOR ECLIPSE

The Crystal Reports® family of offerings from SAP includes Crystal Reports software, version for Eclipse, an intuitive reporting solution designed for Java developers.

## Introduction

Crystal Reports software, version for Eclipse 2.0, is the Crystal Reports offering for Java developers. It contains four components:

- Java runtime engine
- Intuitive viewers for embedding Crystal Reports into both thick-client and Web-based Java applications, designed for ease of use
- A simple, efficient, and embeddable report design tool for authoring Crystal Reports within the Eclipse SDK 3.4.1
- Tooling and SDK to simplify embedding the Crystal Reports runtime engine and viewer into both thick-client and Web-based Java applications.

## Report Viewers Designed for Ease of Use

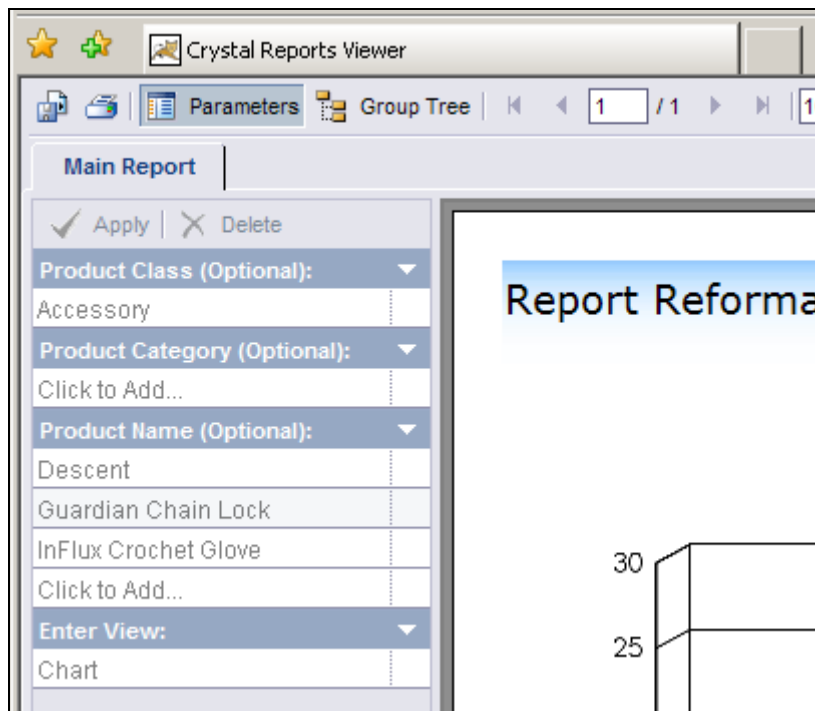
The report viewers are designed for improved ease of use and flexibility. The improved ease of use enables end users to work with a single report to answer more business questions, keep training costs low, and reduce the number of reports that are required to meet all business needs.

Crystal Reports 2008 software benefits report consumers and report developers with the following features:

- Parameter panel and optional parameters
- Dynamic, cascading prompts
- On-report sort controls
- Flash integration for what-if scenario models

### Parameter Panel and Optional Parameters

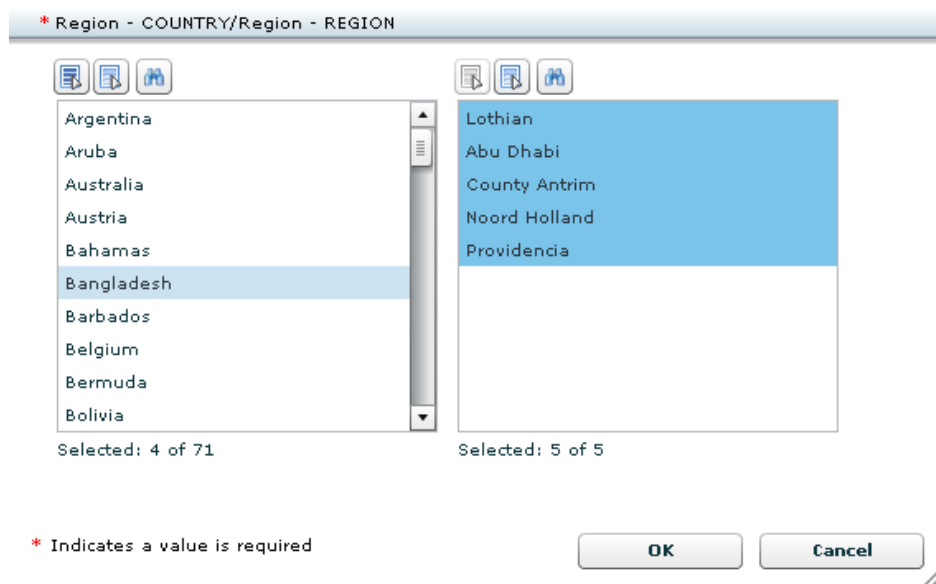
The new parameter panel makes it even easier for report consumers to set and change parameters – without forcing a database refresh. New optional parameters filter the data in the report without forcing a database refresh. Parameters control not just data filtering, but report formatting as well, enabling a single report to take on multiple views. By changing parameter settings, your end users can show and hide report sections. Thus, you can use a single report template to solve many problems, such as online viewing, printing to a color printer, and exporting to Excel.



**Figure 1: On-Report Interactive Parameters Enable Quick Data Filtering and Reformatting without Triggering a Database Refresh**

### Dynamic, Cascading Prompts

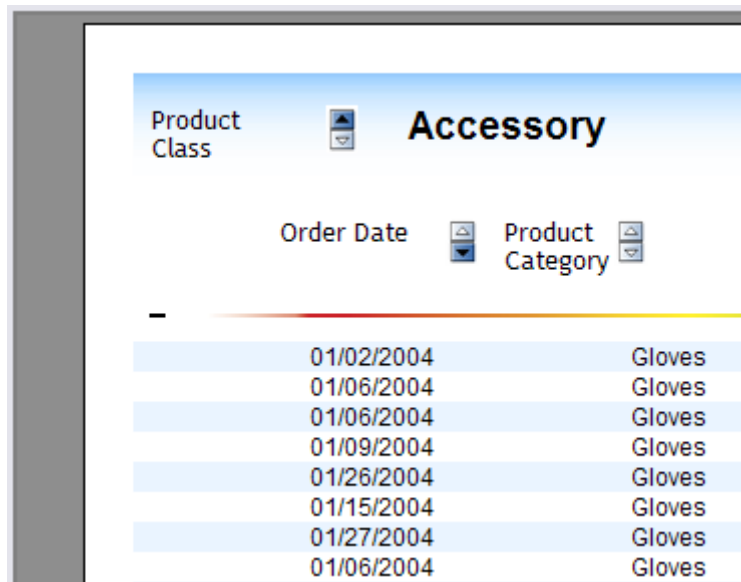
A new Flash-based prompting user interface (UI) populates the list of values at report run time from database values. It also adds a new search features, and support for long lists of values, making it easier for report consumers to select the appropriate parameters for the report, thereby reducing training costs and improving adoption.



**Figure 2: Intuitive User Interface Fosters Ease of Use and Quick Report Navigation**

### On-Report Sort Controls

Sort controls can be added to the report, empowering report consumers to sort records and groups without forcing a database refresh.



**Figure 3: On-Report Sort Controls Allow for Quick Decision Making**

### Flash Integration for What-If Scenario Models

Adding Flash-based What-If scenario models into your report has been made easier using Crystal Reports 2008 and Xcelsius® Engage 2008. Crystal Reports is well-suited for reporting on historical facts; Xcelsius models enable users to project into the future based on adjustable assumptions, controlled by live sliders and dials. The Xcelsius models can be embedded into the report, combining both historical reporting and future projections into a single, powerful report.



**Figure 4: Xcelsius What-If Scenario Model Embedded in Crystal Reports for Powerful Data Interpretations**

### Eclipse Not Required

The runtime JAR files are available separately, so any Java integrated development environment (IDE) can be used for report integration.

## Integrated Report Design

The report designer included with Crystal Reports software, version for Eclipse, is embedded into the Eclipse IDE, and enables report developers to easily create simple reports. New features include an editable preview pane and an embeddable report designer for OEM applications.

### Editable Preview Pane

No more switching back and forth between design and preview panes to see how changes look when your report is executed. Make edits directly in the preview pane that includes live data.

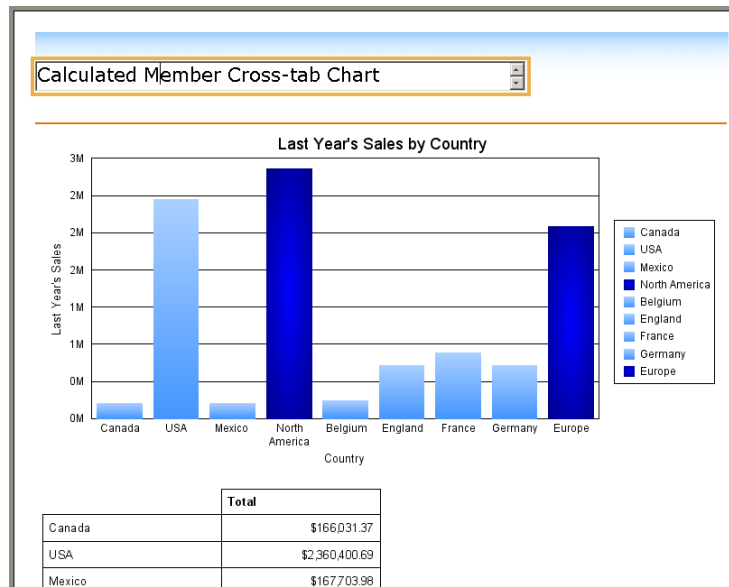


Figure 5: Editable Preview Pane Saves Report Design Time

### Embeddable Report Designer for OEM Applications

OEM partners can embed the Eclipse-based report designer into RCP applications. The report designer exposes extension points to:

- Create new report wizards.
- Open reports from a custom location, and save reports to a custom location.
- Handle custom drag and drop events.
- Add new pages to the report designer.
- Intercept the page change event to update a custom page when the user switches to it.
- Intercept the browse data event to populate the browse data dialog with custom data when a user accesses it.

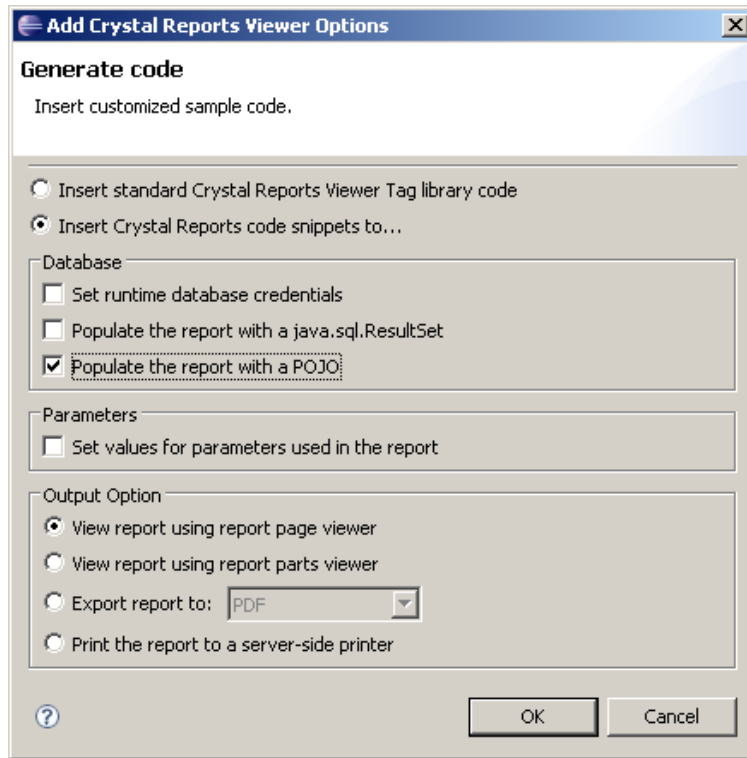
Embedding the report designer into an external application requires additional licensing.

## Embed Reports More Easily

The IDE tooling integrated into Eclipse, improved SDK, and Plain Old Java Objects (POJO) support makes it easier to embed reports into your thick-client or Web applications.

### Easier to Use Crystal Reports Viewer JSP Page Generation

The JSP code generation dialog simplifies the creation of JSP pages based on a Crystal Reports document. Simply right-click the report, choose 'Create Report Viewer JSP.', complete the dialog, and you're done.



**Figure 6: Using the Context Menu to Create a Crystal Reports Viewer**

### Easier to Add Runtime JAR Files

Improved Eclipse IDE tooling supports adding the Crystal Reports JAR libraries necessary for:

- Runtime support for report viewing in Java projects.
- Runtime support for the Crystal Reports Web Services/XML driver.
- Runtime support for Java User Function Libraries (UFLs) that enable Crystal Reports formulas to call out to Java code.

### New Comprehensive SDK

The new Crystal Reports Java SDK is fully compatible with the prior JRC SDK, but adds important new capability such as:

- Full report creation and modification SDK.
- New event listeners enable custom code to be activated on various report events such as opening, saving, and modification.
- Support for Java 5 generics to reduce the amount of casting required.

### Improved POJO Support

Support for Plain Old Java Objects as a data source makes it easy to build reports off your Java applications. You can now set data source location to different POJO objects to make it easier to maintain reports.

## New, Simple Licensing

Crystal Reports software, version for Eclipse, uses the same licensing model as Crystal Reports 2008:

- Thick-client applications can be freely distributed both internally and externally.
- Web applications can be freely distributed internally only.

- External distribution of Web applications is available through either OEM licensing, or by purchasing [Crystal Reports 2008 Developer Advantage](#).

The software is pre-tuned for small and medium-sized applications that don't have demanding [scalability requirements](#).

## Summary

Crystal Reports software, version for Eclipse 2.0, complements and completes Crystal Reports 2008 family of offerings. Modeled for ease of use, its intuitive report design and toolset enables report integration with all types of Java applications, including thick-client and Web applications. Innovative technology, intuitive look-and-feel, and simple licensing makes Crystal Reports software, version for Eclipse, a compelling reporting solution for your next Java application project.

# Quick Facts

## Summary

The Crystal Reports® family of offerings from SAP include embedded versions for integrated development environments (IDE), such as Microsoft Visual Studio and Eclipse, Crystal Reports 2008 software, a stand-alone, fully functional reporting solution, and Crystal Reports 2008 Developer Advantage, a new runtime license for Crystal Reports.

## Business Challenges

- Create and modify reports
- Enhance ease of use with intuitive report development
- Make reporting accessible to all levels of employees with dependable management and delivery options

## Key Features

- **Explore reports interactively** – Use interactive parameters, sort buttons, and Xcelsius what-if scenario models embedded in reports as SWF files
- **Integrate with Visual Studio 2008 and Eclipse 3.4** – Display your reports with graphical user interfaces and Web applications that you develop using familiar integrated development tools
- **Flexible licensing** – Choose the coverage you need, from embedded report design to an integrated, fully functional reporting solution
- **Leverage technical support options** – Access technical resources, portals, and developer forums via the SAP Web site

## Business Benefits

- **Compelling reports**, with stunning visualizations, embedded Flash objects, and what-if scenario modeling
- **Empowered end users**, exploring reports interactively and making informed, effective decisions
- **Savings in design time**, thanks to intuitive development tools
- **Confidence in your development choices**, thanks to support from the SAP community

## For More Information

To learn more about Crystal Reports family of offerings and business intelligence solutions from SAP, visit our Web site at [www.sap.com/sapbusinessobjects](http://www.sap.com/sapbusinessobjects).

© 2009 by SAP AG.

All rights reserved. SAP, R/3, xApps, xApp, SAP NetWeaver, Duet, PartnerEdge, ByDesign, SAP Business ByDesign, and other SAP products and services mentioned herein as well as their respective logos are trademarks or registered trademarks of SAP AG in Germany and in several other countries all over the world.

Business Objects and the Business Objects logo, BusinessObjects, Crystal Reports, Crystal Decisions, Web Intelligence, Xcelsius, and other Business Objects products and services mentioned herein as well as their respective logos are trademarks or registered trademarks of Business Objects S.A. in the United States and in several other countries all over the world. Business Objects is an SAP company.

All other product and service names mentioned are the trademarks of their respective companies. Data contained in this document serves informational purposes only. National product specifications may vary. These materials are subject to change without notice.

These materials are provided by SAP AG and its affiliated companies ("SAP Group") for informational purposes only, without representation or warranty of any kind, and SAP Group shall not be liable for errors or omissions with respect to the materials. The only warranties for SAP Group products and services are those that are set forth in the express warranty statements accompanying such products and services, if any. Nothing herein should be construed as constituting an additional warranty.